



# Rangiora New Life School

A Ministry of Gateway Life Church

*Te kura Ora Hou o Rangiora*

**27 March 2025**

## What's On?

### Term 1 2025

Thu 27 Mar	German Students—Mihi Wakatau
Fri 28 Mar	<b>Secondary Parent Teacher Conferences</b>
	<b>No school for Secondary</b>
	<b>Regular school day for Primary</b>
Tue 1 Apr	Rakahuri Sports Spectacular
Wed 2+3 Apr	Canterbury Swimming Champs
Sat 5+6 Apr	SI Sec Athletics Champs
Wed 9+10 Apr	CasaFest
Thurs 10 Apr	Hikoi Tapu
Fri 11 Apr	Term 1 ends at 3.10pm

### Term 2 2025

Mon 28 Apr	School opens for all students at 8.50
Wed 30 Apr—Sun 4 May	Yr 12 PE Camp
Mon 2 Jun	<b>King's Birthday observed, school closed</b>
Fri 20 Jun	<b>Matariki—school closed</b>
Fri 27 Jun	Term 2 ends at 3.10pm

### 2025 Board of Trustee Meeting Dates

05 February, 05 March, 02 April, 07 May, 04 June  
16 July, 06 August, 03 September, 15 October  
05 November and 03 December  
(7 pm—RNLS Library)

To access the Agenda and Minutes, click on the link below:  
<https://rnls.school.nz/school-board>

**School Docs: RNLS Policies & Procedures including links to our Complaints Process.**  
**For any information regarding our Policies & Procedures**  
please check out [rnls.school.nz/school-docs](https://rnls.school.nz/school-docs)  
User name: RNLS Password: seek

## Term Dates for 2025

### Term 1 2025

#### Thursday 30 January to Friday 11 April

Thurs 30 Jan	School opens for all students at 8.50
Thurs 6 Feb	<b>Waitangi Day—school closed</b>
Fri 7 Feb	<b>Teacher Only Day—school closed</b>
Mon 17 Mar	<b>Teacher Only Day—school closed</b>
Fri 11 April	Term 1 ends at 3.10pm

### Term 2 2025

#### Monday 28 April to Friday 27 June

Mon 28 Apr	School opens for all students at 8.50
Mon 2 Jun	<b>King's Birthday observed—school closed</b>
Fri 20 Jun	<b>Matariki—school closed</b>
Fri 27 Jun	Term 2 ends at 3.10pm

### Term 3 2025

#### Monday 14 July to Friday 19 September

Mon 14 July	School opens for all students at 8.50am
Fri 19 Sept	Term 3 ends at 3.10pm

### Term 4 2025

#### Monday 6 October to Friday 12 December

Mon 6 Oct	School opens for all students at 8.50am
Mon 27 Oct	<b>Labour day—school closed</b>
4-29 Nov	NZQA Exams
Thurs TBA	Yrs 11—13 Prizegiving
Thurs 11 Dec	Yrs 0-8 Prizegiving - last day for primary
Fri 12 Dec	Yr 9-10 Prizegiving and <b>end of Term 4</b>

Dear Parents / Caregivers - Kia ora koutou

### Cultural Hub Event at RNLS

We extend our heartfelt thanks to the PTA, our dedicated volunteers, students, and staff for making our **Cultural Day** a truly memorable event. From the delicious food to the outstanding performances, this celebration of diversity and community was a beautiful reflection of our school's values. We are grateful for the support and participation of our entire school family!

### Teacher Only Day—A Cultural Focus

Following our Cultural Hub event, our staff participated in a **Teacher-Only Day** on Monday, alongside educators from the 13 schools that form the **Tipu Māia Community of Schools**. This special day was hosted at **Tuahiriri Marae** and **Rangiora New Life School**, with **Tuahiwi Education** leading sessions focused on cultural responsiveness in education.

At RNLS, we recognize the importance of embracing and honoring all cultures, particularly in a country as diverse as New Zealand. Approximately **10% of our students identify as Māori**, and we are incredibly proud of their achievements. In 2024, **100% of our Māori students at RNLS passed NCEA Levels 1, 2, and 3**, exceeding the national average by **about 40% at each level**. This is a testament to their hard work, our dedicated teachers, and the supportive learning environment we foster at our school.

This **Teacher-Only Day** was another step forward in equipping our staff to better support and celebrate the cultural diversity within our classrooms and the wider community.

### Canterbury Polyfest

Last weekend, **Mr. Nicholson** and I had the joy of attending **PolyFest at Hagley Park**, where **30 secondary schools** from Canterbury came together to celebrate Pacific cultures through music, dance, and vibrant performances. Among the thousands in attendance, we were especially proud to see **three of our own students—Tryphena Ma'u, Nehama Ma'u, and Sofia Siasau—** performing as part of the **Rangiora High School group**. A special mention also goes to **Siniva Ma'u**, a former RNLS student, who took on the role of **tutor and choreographer** for the group. What an incredible achievement!

To watch their fantastic performance, follow this link or scan the QR code  
<https://bit.ly/2025polyfest>



We are truly blessed to see our students and alumni shining in their God-given talents.

Ngā manaakitanga

Stephen Walters

**A Community That Cares**

**Students Who Achieve**

Denchs Rd, Rangiora 7400 t: (03) 313 6332

e: [admin@rnls.school.nz](mailto:admin@rnls.school.nz) [www.rnls.school.nz](http://www.rnls.school.nz)



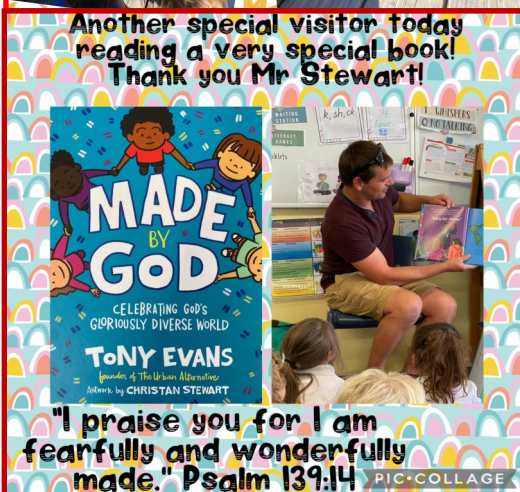
# Te kura ora hou o Rangiora

Reminder: Parents please note that school opens for **student access from 8.30 m**—ie not beforehand please.  
We have a duty teacher supervising the Denchs Rd netball court area from 8:30 am to 8:50 am (prior to class entry).  
**However the Coffee Shop is available from 8.15am with hot drinks for children under parental supervision.**

NB: If your emails, caregiver details, address, phone numbers, circumstances, etc have changed over the last few months please let the school office staff know asap. [reception@rnls.school.nz](mailto:reception@rnls.school.nz) or 03 313 6332.

**Any attendance related queries should be sent to [reception@rnls.school.nz](mailto:reception@rnls.school.nz)**

Thank you to our parents who respond to our absence texts every morning. If we don't hear from you by text we will follow up with a phone call approx. 30 minutes later.





# Cultural Event





## God is Wisdom

"The fear of the LORD is the beginning of knowledge, but fools despise wisdom and instruction." Proverbs 1:7

"If any of you lacks wisdom, let him ask God" James 1:5

"For the LORD gives wisdom; from his mouth come knowledge and understanding." Proverbs 2:6





Coffee sales are available from 8.15am.

Try our TERM 1 Flavour Sensation!

\$0.50 extra to any hot drink!

Easter Egg

Spiced Pumpkin

And the classical favourites...

Vanilla

Hazelnut

Caramel



## RNLS BARISTA COFFEE

### Menu

DRINKS	Teachers/Students		Parents/Caregivers	
	Small	Large	Small	Large
Long Black/Americano	\$2.50	\$3.50	\$3.50	\$4.50
Flat White	\$2.50	\$3.50	\$3.50	\$4.50
Latte	\$2.50	\$3.50	\$3.50	\$4.50
Cappuccino	\$2.50	\$3.50	\$3.50	\$4.50
Mochaccino	\$2.50	\$3.50	\$3.50	\$4.50
Chai	\$2.50	\$3.50	\$3.50	\$4.50
Hot Chocolate	\$2.50	\$3.50	\$3.50	\$4.50

All coffees are double shot- extra shots 50c

Decaf available

### PLANT MILKS 50c

Oat  
Soy  
Almond

### FLAVOUR SHOTS 50c

Check out our term special!

PREPAID CARDS (6 drinks) \$17.50 Teachers/Students \$22.50 Parents/Caregivers

Ask for your loyalty card today - buy 5 drinks, get your 6<sup>th</sup> drink free!





# Extra News



**Gateway Life Church** has recommenced **Youth Group**—every second Friday nights 7-9 pm for ages 12-18.  
All young people are welcome!

Further additional information (if required): Sharon Eloff 021 030 4781.



**I think a hero is an ordinary individual who finds strength to persevere and endure in spite of overwhelming obstacles.**

Christopher Reeve

## Support Services

All right parenting [www.allright.org.nz/parents](http://www.allright.org.nz/parents)

Altogether Autism is a service which offers specialised information and support around ASD. [gtrcanterbury@parent2parent.org.nz](mailto:gtrcanterbury@parent2parent.org.nz)

### Aviva

Aviva is a Canterbury-wide, specialist family violence and sexual violence agency. We offer an extensive range of support services and programmes for people of any age (children, youth, and adults), any gender, sexuality, or experience of violence; to become safe and begin a journey toward a fulfilling, violence-free life.

Freephone: 0800 28 48 26

Email: [enquiries@aviva.org.nz](mailto:enquiries@aviva.org.nz)

### Barnardos

LEAP - work with families whose vulnerability arises from their challenges with one or more of the following: family violence, alcohol and drug use, child health or disability, emotional abuse or neglect, risk or actual statutory involvement, parental mental health issues- for more information

Ph: 0800 Barnardos (0800227627)

### Battered Women's Trust – North Canterbury

Battered Women's Trust (includes Rural Services)

For women, children & young people, individual & group domestic violence education

Office: 033324122 | Crisis & support line - 0800 REFUGE

### Budgeting Services North Canterbury

A free and confidential financial mentoring and budgeting advice service to individuals and families in the Waimakariri and Hurunui

Ph: 03 313 3505

Email: [servicemanager@bsnc.org.nz](mailto:servicemanager@bsnc.org.nz)

### CCS Disability Action, North Canterbury

Support & Advocacy for people & their families

Ph: Sandra Black 0273687525 and Jes Kircher 0272779857

### Comcare Trust North Canterbury

Offer strengths-based recovery focused supports for people with mental illness and/or addictions. Community Support Services, Peer Support Services, and Activelinks Health & Fitness Services.

Ph: 0800 537 3464 <https://www.comcare.org.nz>

### Community Energy Action Charitable Trust

Services include insulation, heating, energy advice, and good quality recycled curtains. Services are available to all households with subsidies up to 100% available to eligible households. Ph. 0800 GETWARM or visit [www.cea.co.nz](http://www.cea.co.nz)

Oranga Tamariki – Oranga Tamariki Ministry for Children (Regional)  
High Street, Rangiora Ph: 0508 326 459

### Community Wellbeing North Canterbury Trust

Provides free community and social services that strengthen the wellbeing of families, children and young people in Waimakariri and the Hurunui.

Services include:

- Wellbeing support for whānau/families and tamariki/children
- Community parenting programmes
- Early childhood education
- Wellbeing support for rangatahi/young people including specialist alcohol and drug support
- Kaiapoi food bank
- Restorative justice

T: 03 310 6375 E: [info@wellbeingnc.org.nz](mailto:info@wellbeingnc.org.nz) or [www.wellbeingnc.org.nz](http://www.wellbeingnc.org.nz)

### Early Start

A home visiting service that provides support and parenting programmes in the Waimakariri and Hurunui areas to whānau/families who are expecting a new-born or caring for a new baby. Phone 0800378278. Email: [reception@earlystart.co.nz](mailto:reception@earlystart.co.nz)

### Hope Community Trust

Community Support, wrap around Care for families and individuals, Counselling, Community Garden drop in area, Men's and Women's connect groups. 115 East Belt, Rangiora.

Ph: 03 928 3066 [support@hopecommunitytrust.co.nz](mailto:support@hopecommunitytrust.co.nz)

### Oxford Community Trust

For community information, budget advice, family support, counselling, holiday & youth programmes. Main St, Oxford.

Ph: Jo Ealam 03 312 3006

### Parenting Through Separation

To register please visit [www.familyworksuppersouth.org.nz](http://www.familyworksuppersouth.org.nz). Click News and Events (top right of page), then click events. Alternatively, you can contact Karen on 0800477874

### Plunket

#### Plunket Well Child Service

Well Child services, home visits & appointments.

Plunket Adminline 0800 184 03

24/7 Phone support & data free website [www.plunket.org.nz](http://www.plunket.org.nz)

#### Plunket Post Natal Adjustment Programme

Supports families experiencing difficulties adjusting to parenting, individual & group Ph: 03 365 1646

#### Plunket Pregnancy and Parenting Education Course

Antenatal classes for parents-to-be and their support person.

Info and options for: pregnancy, labour, birth and the postnatal period. [www.plunketppe.org.nz](http://www.plunketppe.org.nz) Ph: 027 275 8477

<https://www.facebook.com/canterburyplunket/>

Clothing Exchange – please refer to the Canterbury Plunket Facebook page for details.

### Presbyterian Support USI Family Works

We work with parents/caregivers and their children to the age of 18. The work is based around parenting and relationships within the family unit. Ph: Michelle Ramsay 03 2612887 [micheller@psusi.org.nz](mailto:micheller@psusi.org.nz)

### Public Health Nurses

Visit schools to advise on children's health, and work with families on health related concerns. Ph: Catherine Dowle 03 311 8665 or Anne Braid 03 311 8664 [catherine.dowle@cdhb.health.nz](mailto:catherine.dowle@cdhb.health.nz)

### Rachel's House Trust - Young Parent Support

Rachel's House Trust- Supporting Mothers and Whānau

"Supporting mothers and whānau on their journey from pregnancy to parenting. We provide a safe space for families to navigate the changing world around them. Playgroup every Thursday at 10am in the Loft, 1-1 social work support, advocacy and pre loved clothing aged 0 to 5yrs all free. 021 090 11602 for enquiries [socialworker@racheshouse.org.nz](mailto:socialworker@racheshouse.org.nz)

Rangiora Salvation Army Family Store Budgeting advice & Food Bank, 15 Albert St, Rangiora 03 313 6947

### St John Health Shuttle, North Canterbury

Transport to Chch for medical related appointments, bookings through: St John Ph: 0800 383 373

Yellow Brick Road Te Wāpūāhoaho: Supporting families towards mental wellbeing

Yellow Brick Road is an organisation supporting families who care for a loved one with mental health challenges. We offer confidential guidance and navigation through mental health services, advocacy, and education. Individual/family meetings and/or a number of different programmes for both children, adolescents, adults and groups, plus a variety of support groups including those bereaved by suicide. Service is free and available via self-referral or a health professional. [support.canterbury@yellowbrickroad.org.nz](http://support.canterbury@yellowbrickroad.org.nz) / 0800 87 66 82

### Te Puawaitanga ki Ōtautahi Trust

The Trust supports whānau throughout the different stages in life. Our services are delivered in the home and community.

- *Whānau Ora Navigators* can help you plan for now and the future to reach your goals.
- *Rapuora Community Nursing Team* can help you understand and manage life with chronic conditions (such as diabetes, heart and respiratory disease).
- *Vaccination mahi* including COVID-19, seasonal flu and measles, mumps and rubella (MMR) for eligible whānau.
- *Rongoā* including with taonga pūrora.
- *Family Start* an intensive home visiting programme to improve tamariki health, growth and whānau circumstances
- *Tamaiti Healthy Homes* aims to increase the number of tamariki living in warm, dry and healthy homes to reduce avoidable hospitalisations and ill health due to housing-related conditions.



# Extra News

## LISTENING TO FAMILIES

Designed for families, and for educators and health professionals working with young people, *Listening to Families* connects you with **trusted specialists**, empowering individuals, whānau and communities with **advice and support**.

<https://www.listeningtofamilies.co.nz> **Listening to Families** is a grassroots solution, providing families access to the answers to commonly asked questions in an easy-to-use, conversational video.

## Access to free period products

Thanks to the Ministry of Education's **access to period products initiative**, RNLS has a supply of free period products for children and young people at the school to conveniently access from the school office.

To request: please email :[nancywu@rnl.school](mailto:nancywu@rnl.school)  
or contact the School Office. 03 313 6332

## RNLS Uniform

As many of you are aware, the pinafore and kilts have been difficult to come by, we now have new stock. These are stocked by NZ Uniforms and can be bought online or from their shop in Blenheim Rd. They are still the Royal Stewart Tartan but in BLUE and not red as we have at the moment.

They are well made and the fabric is a wool and polyester blend. In Term 1 2025 NZ Uniform will have a pop up shop at our school for purchases, with a date to be advised.

Karen Rennie



Te Waitai Sefton School

## SEFTON TUG OF WAR

30TH MARCH 2025

TE WAITAI SEFTON SCHOOL FUNDRAISER  
GATES OPEN AT 9AM TO 3PM  
603 UPPER SEFTON ROAD, SEFTON,  
NORTH CANTERBURY



## Relay For Life North Canterbury

sign up now!

5 April 2025, 10am-10pm

[relayforlife.org.nz](https://relayforlife.org.nz)

Cancer Society RELAY FOR LIFE MAJOR PARTNER PRECUT

**FAST grass** Landscaping

**CoolTranz**  
REAL & COOL & TRANSPORT EVERYWHERE



THANKS TO OUR SPONSORS

Join us for a fun filled community day out in the country. The Sefton Tug of war is a Te Waitai Sefton school fundraiser, where teams of 8 compete in the ancient sport of Tug of War!

ENTER A TEAM NOW

See the website for details - Great prizes!

Free entry for spectators.

There will be children's entertainment - Market stalls - Hot food - Coffee and more.

Cash only event.

Follow us on Facebook!

PLEASE NOTE- this is an alcohol, smoke and vape free event as it is on school grounds- Thanks.



## Exploring Giftedness Conference 2025

### Te Hui mō te Pūmanawa 2025

Rutland Street Church, 12 Rutland St  
Christchurch | Ōtautahi, New Zealand

Friday 26 September 2025 6.30pm-9pm

Saturday 27 September 2025 9.30am-4pm

The must-attend event for expert insights, practical strategies, and support in gifted education.



[www.exploringgiftedness.org.nz](https://www.exploringgiftedness.org.nz)

Including  
**Kids Conference**  
for gifted kids (5-12)  
on Sat 27th!



## community KAI

individuals and whānau welcome

2 course meal with the added bonus of no dishes!

A great chance for you to meet new people in our community.



Gold coin donation  
111 East Belt Rangiora  
Wednesdays from 5.45pm  
No booking required  
[support@hopecommunity.co.nz](mailto:support@hopecommunity.co.nz)



# SkoolLoop


**Chim Chim**  
 Safety Keepers & Chimney Sweepers
 [Tap Here](#)


**PAWS** Pegasus and Woodend  
**VETERINARY**  
 Services
 


**STRAIGHT-N-PAINT**  
 COLLISION REPAIR SPECIALISTS


**Affordable Concrete & Paving**  
[Tap here for more info](#)


**Kids Base**  
 kidsbase.co.nz
 [Before School](#)
[After School](#)
[Holidays](#)
[Enrol](#)


**TAW BUILDERS LTD**  
 Honesty - Reliability - Quality
 

**McCormicks Auto Glass Limited**

**Mobile Service – I will come to you**  
 Call Jai: 027 270 5508


**NOVUS glass**  
 Repair & Replacement
 [TAP HERE](#)

**morechoice.**

**mikegreerhomes**


**ANYTIME FITNESS**  
 RANGIORA
 [SPECIAL OFFER TAP HERE](#)

Phone 03 313 1430  
 lambandhayward.co.nz

**Lamb & Hayward**


**WARWICK KIRWAN PLUMBING**



**Electrical Laser Rangiora**



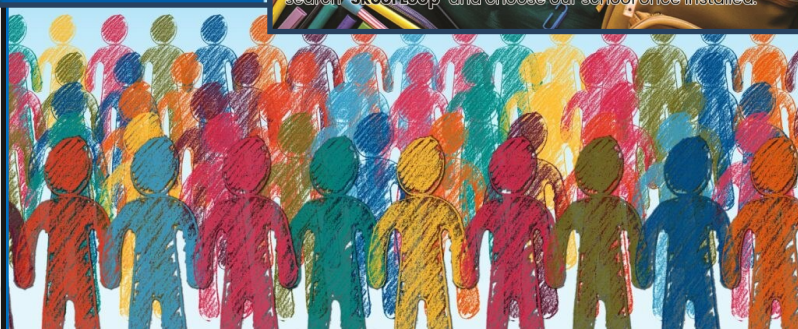
**KATHERINE WILMOTT LEGAL LTD**

**North Canterbury Lawyers**

## Downloading the Skool Loop app - a step by step guide

Once you have downloaded the Skool Loop App, via either your Google Play or App store, please follow the below instructions to select your school -


- Open the Skool Loop App - you will land on a welcome page.
- Click the 'Select your schools' this will bring you to a menu you can either search your school or follow the country/region prompts.
- Once you reach your school, select it with the tick on the righthand side.
- Tap the 'select schools' button in the top right corner.
- Tap the big orange choose button. This will load your school and bring you to the settings page.
- Subscribe to the groups that are relevant to you, then click the 'go back' button on your phone, which will bring you to the main screen of your schools app.




## Ready Set Spring

Stay in the Loop with the Skool Loop App

Download today to keep up to date with school information. Notices, Newsletters, Absentee Notification and much more






Simple Free Download: In Google play & App Store search 'Skool Loop' & choose our school once installed.

GET IT ON Google Play

Download on the App Store

## RNLS App Sponsors!

If you would like to advertise on the School Skool Loop App please email

[Content@skoolloop.com](mailto:Content@skoolloop.com)

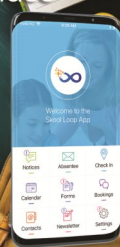
To download our app: In Google Play & App Store search 'Skool Loop' and choose School once installed.



All our school news in one place

## Download The Skool Loop App Today

Simple free download: In Google Play & App Store search 'Skool Loop' and choose our school once installed.





# Notices

## Gateway Stadium / Events Centre Bookings

Please contact [bookings@rnls.school.nz](mailto:bookings@rnls.school.nz) for information on availability for public bookings outside school hours.

**Hardship Fund:** Any donation received for the benefit of families who may be struggling financially, is very much appreciated. Please make your payment to the regular school account tagging the payment as **Hardship Fund**.

Rangiora New Life School 01 0877 0072756 02

<https://mentalhealth.org.nz/five-ways-to-wellbeing>

## Athlete's Foot - School Rewards

Just nominate our school at the time of purchase, i.e. Rangiora New Life School!

Eligible: RNLS staff, students or members of their families. \$15 worth of sports equipment or \$10 cash from every pair of shoes purchased from our Northlands Athlete's Foot store, will be donated to RNLS.

## FIVE WAYS TO WELLBEING



INTRODUCE THESE FIVE SIMPLE STRATEGIES INTO YOUR LIFE AND YOU WILL FEEL THE BENEFITS.

Mental Health Foundation  
mauri iā, mauri ora  
[www.mentalhealth.org.nz](http://www.mentalhealth.org.nz)



# The Hope Op Shop

Rangiora New Life School  
Second Hand Uniform  
Shop in conjunction with  
the Hope Op Shop.

113 East Belt  
Open Monday - Friday 9am - 3.30pm  
Saturday 9.30am - 12.30pm  
[www.thehopecommunitytrust.org](http://www.thehopecommunitytrust.org)