



# Rangiora New Life School

A Ministry of Gateway Life Church

*Te kura Ora Hou o Rangiora*

13 February 2025

Term 1 Week 3

### What's On?

#### Term 1 2025

Mon 17—Wed 19 Feb Yr 9 Camp  
 Fri 21 Feb Primary Conferences  
 No school for Primary  
 Regular school day for Secondary  
 Tues 4—Wed 5 Mar Photolife—school photos  
 Fri 14 Mar Cultural Hub Event  
**Mon 17 Mar Teacher Only Day—school closed**  
 Fri 11 Apr Term 1 ends at 3.10pm

#### Term 2 2025

Mon 28 Apr School opens for all students at 8.50  
**Mon 2 Jun King's Birthday observed—school closed**  
**Fri 20 Jun Matariki—school closed**  
 Fri 27 Jun Term 2 ends at 3.10pm

#### 2025 Board of Trustee Meeting Dates

05 February, 05 March, 02 April, 07 May, 04 June  
 16 July, 06 August, 03 September, 15 October  
 05 November and 03 December  
 (7 pm—RNLS Library)

To access the Agenda and Minutes, please go to:  
<https://rnls.school.nz/board-of-trustees>

School Docs: RNLS Policies & Procedures including links to our Complaints Process.  
 For any information regarding our Policies & Procedures please check out [rnls.schooldocs.co.nz](https://rnls.schooldocs.co.nz)  
 User name: RNLS Password: seek

### Term Dates for 2025

#### Term 1 2025

**Thursday 30 January to Friday 11 April**  
 Thurs 30 Jan School opens for all students at 8.50  
 Thurs 6 Feb **Waitangi Day—school closed**  
 Fri 7 Feb **Teacher Only Day—school closed**  
 Fri 21 Feb Primary Conferences No school for Primary  
 Regular school day for Secondary  
 Mon 17 Mar **Teacher Only Day—school closed**  
 Fri 11 April Term 1 ends at 3.10pm

#### Term 2 2025

**Monday 28 April to Friday 27 June**  
 Mon 28 Apr School opens for all students at 8.50  
 Mon 2 Jun King's Birthday observed—school closed  
 Fri 20 Jun Matariki—school closed  
 Fri 27 Jun Term 2 ends at 3.10pm

#### Term 3 2025

**Monday 14 July to Friday 19 September**  
 Mon 14 July School opens for all students at 8.50am  
 Fri 19 Sept Term 3 ends at 3.10pm

#### Term 4 2025

**Monday 6 October to Friday 12 December**  
 Mon 6 Oct School opens for all students at 8.50am  
**Mon 27 Oct Labour day—school closed**  
 4-29 Nov NZQA Exams  
 Thurs TBA Yrs 11—13 Prizegiving  
 Thurs 11 Dec Yrs 0-8 Prizegiving - last day for primary  
 Fri 12 Dec Yr 9-10 Prizegiving and end of Term 4

### Dear Parents / Caregivers - Kia ora koutou

With our first full week of the year underway this week, I thank all the staff for their preparation for a smooth start.

We are aware of supply difficulties for uniform, and are working with the suppliers to resolve these.

You will see, from emails sent, that the Board by-election process is underway. We thank the parents who serve our school in this space. It is very exciting seeing the Cultural Hub event organized by the PTA, and involving so many of our community.

See you there. (I'll be doing the candy floss!)

Ngā manaakitanga

Stephen Walters

2024



A Community That Cares

Students Who Achieve

Denchs Rd, Rangiora 7400 t: (03) 313 6332

e: [admin@rnls.school.nz](mailto:admin@rnls.school.nz) [www.rnls.school.nz](http://www.rnls.school.nz)



# Te kura ora hou o Rangiora

2024 Cans for Christmas



2024 Primary Prizegiving



NB from the RNLS Proprietors: The only dogs permitted on school premises are those officially trained for sight impaired and sensory issue work. This applies to both within and outside school instructional times— i.e. not at any time!



# God is one God

“Hear O Israel! The LORD our God, the Lord is one.” Deuteronomy 6:4

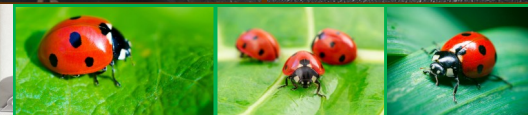
“I am God, and there is no other; I am God, and there is none like me.” Isaiah 46:9

Reminder: Parents please note that school opens for **student access from 8.30 m**—ie not beforehand please. We have a duty teacher supervising the Denchs Rd netball court area from 8:30 am to 8:50 am (prior to class entry). However the Coffee Shop is available from 8.15am with hot drinks for children under parental supervision.

NB: If your emails, caregiver details, address, phone numbers, circumstances, etc have changed over the last few months please let the school office staff know asap. [reception@rnls.school.nz](mailto:reception@rnls.school.nz) or 03 313 6332.

**Any attendance related queries should be sent to [reception@rnls.school.nz](mailto:reception@rnls.school.nz)**

Thank you to our parents who respond to our absence texts every morning. If we don't hear from you by text we will follow up with a phone call approx. 30 minutes later.



**Our Ladybugs with Mrs Downes today**

PIC-COLLAGES





Coffee sales are available from 8.15am.

Thank you for the seating!



\$0.50 extra to any hot drink!

## Try our TERM 1 Flavour Sensation!

Easter Egg



Spiced Pumpkin

And the classical favourites...

- Vanilla
- Hazelnut
- Caramel



## RNLS BARISTA COFFEE

### Menu

DRINKS	Teachers/Students		Parents/Carers	
	Small	Large	Small	Large
Long Black/Americano	\$2.50	\$3.50	\$3.50	\$4.50
Flat White	\$2.50	\$3.50	\$3.50	\$4.50
Latte	\$2.50	\$3.50	\$3.50	\$4.50
Cappuccino	\$2.50	\$3.50	\$3.50	\$4.50
Mochaccino	\$2.50	\$3.50	\$3.50	\$4.50
Chai	\$2.50	\$3.50	\$3.50	\$4.50
Hot Chocolate	\$2.50	\$3.50	\$3.50	\$4.50

All coffees are double shot- extra shots 50c

Decaf available

### PLANT MILKS 50c

- Oat
- Soy
- Almond

### FLAVOUR SHOTS 50c

Check out our term special!

PREPAID CARDS (6 drinks) \$17.50 Teachers/Students \$22.50 Parents/Carers

Ask for your loyalty card today - buy 5 drinks, get your 6<sup>th</sup> drink free!





# News

## Harakeke/flax weaving rōpū/group

Would you like to learn to weave a star/flower etc. or maybe you are an expert already?

We would love a group of students and parents to join together in February and be taught to weave a star/flower etc. as well as tikanga of weaving, and then we hope to teach the tamariki/rangatahi in the classrooms.

The woven items will form part of a welcome display in the entrance to the Cultural Hub event (14 March 2025).

Please contact Jo Simpson [jomaresimpson@gmail.com](mailto:jomaresimpson@gmail.com) or 0275 562 665 if you're keen to be involved.

Tēnā koe!



**FLAX / HARAKEKE WEAVING**

Support the RNLS Cultural Hub Event and learn to weave a flower.

Join a group of parents & students and learn to weave a flower/putiputi in February. We will then teach the students in class to create flowers for a welcome display at the RNLS Cultural Hub Event. Contact Jo Simpson [jomaresimpson@gmail.com](mailto:jomaresimpson@gmail.com)

**PTA RNLS Cultural Hub Event:**  
**Friday 14th March**  
**4.30 - 7pm**  
**RNLS Events Centre**

If you are able to bless us in the following ways, we would be very grateful

**Sponsorship of Food Ingredients for the Food Items:**

Please email:  
**Cushlafitzgibbon**  
**@rnls.school.nz**

**Large flags or Bunting Flags of ANY country: named to Mrs Fitz in R4 please**

- ~ Outdoor Umbrellas and stands
- ~ Outdoor Tables with umbrella hole (any size or shape)
- ~ Please contact Jemma Day on: [Brett.jemma@gmail.com](mailto:Brett.jemma@gmail.com)



**RNLS Upcoming Cultural Hub Event:**  
**14 March 2025**  
**4.30pm - 7pm**

- South Africa 🇿🇦
- Germany 🇩🇪
- America 🇺🇸
- New Zealand 🇳🇿
- Holland 🇳🇱
- France 🇫🇷
- Middle East 🇸🇦
- England 🇬🇧
- Asia & India 🇮🇳
- Tonga 🇹🇴

We would LOVE to hear from YOU!

If you could assist in ANY of the following ways: Please contact Mrs Fitz: [cushlafitzgibbon@rnls.school.nz](mailto:cushlafitzgibbon@rnls.school.nz)

- Food Stall roster
- Donation for ingredients
- Business Sponsor
- Set up/pack down
- Large Flags
- Decorating Team



**MRS FITZ SHARED HER SPECIAL BOOK**



# Extra News



**Gateway Life Church** has recommenced **Youth Group**—every second Friday nights 7-9 pm for ages 12-18. All young people are welcome!

Further additional information (if required): Sharon Eloff 021 030 4781.



## NZ OWNED AND OPERATED



### Support Services

All right parenting [www.allright.org.nz/parents](http://www.allright.org.nz/parents)

Altogether Autism is a service which offers specialised information and support around ASD. [gtrcanterbury@parent2parent.org.nz](mailto:gtrcanterbury@parent2parent.org.nz)

#### Aviva

Aviva is a Canterbury-wide, specialist family violence and sexual violence agency. We offer an extensive range of support services and programmes for people of any age (children, youth, and adults), any gender, sexuality, or experience of violence; to become safe and begin a journey toward a fulfilling, violence-free life.  
Freephone: 0800 28 48 26  
Email: [enquiries@aviva.org.nz](mailto:enquiries@aviva.org.nz)

#### Barnardos

LEAP - work with families whose vulnerability arises from their challenges with one or more of the following: family violence, alcohol and drug use, child health or disability, emotional abuse or neglect, risk or actual statutory involvement, parental mental health issues- for more information  
Ph: 0800 Barnardos (0800227627)

#### Battered Women's Trust – North Canterbury

Battered Women's Trust (includes Rural Services)  
For women, children & young people, individual & group domestic violence education  
Office: 033324122 | Crisis & support line - 0800 REFUGE

#### Budgeting Services North Canterbury

A free and confidential financial mentoring and budgeting advice service to individuals and families in the Waimakariri and Hurunui  
Ph: 03 313 3505  
Email: [servicemanager@bsnc.org.nz](mailto:servicemanager@bsnc.org.nz)

#### CCS Disability Action, North Canterbury

Support & Advocacy for people & their families  
Ph: Sandra Black 0273687525 and Jes Kircher 0272779857

#### Comcare Trust North Canterbury

Offer strengths-based recovery focused supports for people with mental illness and/or addictions. Community Support Services, Peer Support Services, and Activelinks Health & Fitness Services.  
Ph: 0800 537 3464 <https://www.comcare.org.nz>

#### Community Energy Action Charitable Trust

Services include insulation, heating, energy advice, and good quality recycled curtains. Services are available to all households with subsidies up to 100% available to eligible households. Ph. 0800 GETWARM or visit [www.ceat.co.nz](http://www.ceat.co.nz)

Oranga Tamariki – Oranga Tamariki Ministry for Children (Regional)  
High Street, Rangiora Ph: 0508 326 459

#### Community Wellbeing North Canterbury Trust

Provides free community and social services that strengthen the wellbeing of families, children and young people in Waimakariri and the Hurunui.

#### Services include:

- Wellbeing support for whānau/families and tamariki/children
- Community parenting programmes
- Early childhood education
- Wellbeing support for rangatahi/young people including specialist alcohol and drug support
- Kaiapoi food bank
- Restorative justice

T: 03 310 6375 E: [info@wellbeingnc.org.nz](mailto:info@wellbeingnc.org.nz) or [www.wellbeingnc.org.nz](http://www.wellbeingnc.org.nz)

#### Early Start

A home visiting service that provides support and parenting programmes in the Waimakariri and Hurunui areas to whānau/families who are expecting a new-born or caring for a new baby. Phone 0800378278. Email: [reception@earlystart.co.nz](mailto:reception@earlystart.co.nz)

#### Hope Community Trust

Community Support, wrap around Care for families and individuals, Counselling, Community Garden drop in area, Men's and Women's connect groups. 115 East Belt, Rangiora.  
Ph: 03 928 3066 [support@hopecommunitytrust.co.nz](mailto:support@hopecommunitytrust.co.nz)

#### Oxford Community Trust

For community information, budget advice, family support, counselling, holiday & youth programmes. Main St, Oxford.  
Ph: Jo Ealam 03 312 3006

#### Parenting Through Separation

To register please visit [www.familyworksupportsouth.org.nz](http://www.familyworksupportsouth.org.nz). Click News and Events (top right of page), then click events. Alternatively, you can contact Karen on 0800477874

#### Plunket

[Plunket Well Child Service](http://www.plunket.co.nz)  
Well Child services, home visits & appointments.  
[Plunket Adminline 0800 184 03](http://www.plunket.co.nz)

24/7 Phone support & data free website [www.plunket.org.nz](http://www.plunket.org.nz)  
[Plunket Post Natal Adjustment Programme](http://www.plunket.org.nz)  
Supports families experiencing difficulties adjusting to parenting, individual & group Ph: 03 365 1646

#### [Plunket Pregnancy and Parenting Education Course](http://www.plunket.org.nz)

Antenatal classes for parents-to-be and their support person. Info and options for: pregnancy, labour, birth and the postnatal period. [www.plunketppee.org.nz](http://www.plunketppee.org.nz) Ph: 027 275 8477  
<https://www.facebook.com/canterburyplunket/>  
Clothing Exchange – please refer to the Canterbury Plunket Facebook page for details.

#### Presbyterian Support USI Family Works

We work with parents/caregivers and their children to the age of 18. The work is based around parenting and relationships within the family unit. Ph: Michelle Ramsay 03 2612887 [micheller@psusi.org.nz](mailto:micheller@psusi.org.nz)

#### Public Health Nurses

Visit schools to advise on children's health, and work with families on health related concerns. Ph: Catherine Dowle 03 311 8665 or Anne Braid 03 311 8664 [catherine.dowle@cdhb.health.nz](mailto:catherine.dowle@cdhb.health.nz)

#### Rachel's House Trust - Young Parent Support

Rachel's House Trust- Supporting Mothers and Whānau  
"Supporting mothers and whānau on their journey from pregnancy to parenting. We provide a safe space for families to navigate the changing world around them. Playgroup every Thursday at 10am in the Loft, 1-1 social work support, advocacy and pre loved clothing aged 0 to 5yrs all free. 021 090 11602 for enquiries  
[socialworker@racheshouse.org.nz](mailto:socialworker@racheshouse.org.nz)

Rangiora Salvation Army Family Store Budgeting advice & Food Bank, 15 Albert St, Rangiora 03 313 6947

#### St John Health Shuttle, North Canterbury

Transport to Chch for medical related appointments, bookings through: St John Ph: 0800 383 373

#### Yellow Brick Road Te Wāhāpūahoaho: Supporting families towards mental wellbeing

Yellow Brick Road is an organisation supporting families who care for a loved one with mental health challenges. We offer confidential guidance and navigation through mental health services, advocacy, and education. Individual/family meetings and/or a number of different programmes for both children, adolescents, adults and groups, plus a variety of support groups including those bereaved by suicide. Service is free and available via self-referral or a health professional.  
[support.canterbury@yellowbrickroad.org.nz](mailto:support.canterbury@yellowbrickroad.org.nz) / 0800 87 66 82

#### Te Puawaitanga ki Ōtautahi Trust

The Trust supports whānau throughout the different stages in life. Our services are delivered in the home and community.

- *Whānau Ora Navigators* can help you plan for now and the future to reach your goals.
- *Rapuora Community Nursing Team* can help you understand and manage life with chronic conditions (such as diabetes, heart and respiratory disease).
- *Vaccination mahi* including COVID-19, seasonal flu and measles, mumps and rubella (MMR) for eligible whānau.
- *Rongoā* including with taonga pūrora.
- *Family Start* an intensive home visiting programme to improve tamariki health, growth and whānau circumstances
- *Tamaiti Healthy Homes* aims to increase the number of tamariki living in warm, dry and healthy homes to reduce avoidable hospitalisations and ill health due to housing-related conditions.

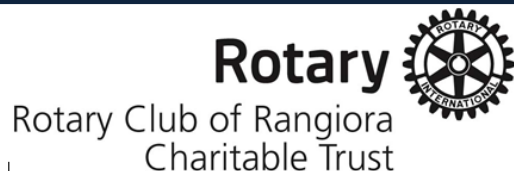


# Extra News

## LISTENING TO FAMILIES

Designed for families, and for educators and health professionals working with young people, Listening to Families connects you with **trusted specialists**, empowering individuals, whānau and communities with **advice and support**.

<https://www.listeningtofamilies.co.nz> Listening to Families is a grassroots solution, providing families access to the answers to commonly asked questions in an easy-to-use, conversational video



### **2025 Applications for Outward Bound and Spirit of Adventure courses.**

The Rotary Club of Rangiora Charitable Trust is calling for applications from young people aged 16 to 18 interested in taking part in either an 8-day Outward Bound Course or a 10-day Spirit of Adventure voyage.

Those selected (normally one for each event) may have all of the registration cost of the course/voyage met. The cost of an 8-day Outward Bound course (ages 16-18) is \$3,650 and for a 10-day Spirit of Adventure voyage (ages 16-19) is \$2,995. This funding is available for those wanting to go on a course/voyage during 2025 or early 2026.

If you are interested in applying for one of these courses/voyages you are asked to complete the application form which is available from Alan Missen at [awmissen@xtra.co.nz](mailto:awmissen@xtra.co.nz).

The closing date for applications is  
Friday 7th March 2025.

### **Access to free period products**

Thanks to the Ministry of Education's **access to period products initiative**, RNLS has a supply of free period products for children and young people at the school to conveniently access from the school office.

To request: please email [nancywu@mls.school](mailto:nancywu@mls.school) or contact the School Office. On 03 313 6332

Mr Walters  
Enjoying some relaxing time.



### **RNLS Uniform**

As many of you are aware, the pinafore and kilts have been difficult to come by, we now have new stock. These are stocked by NZ Uniforms and can be bought online or from their shop in Blenheim Rd. They are still the Royal Stewart Tartan but in BLUE and not red as we have at the moment. They are well made and the fabric is a wool and polyester blend. In Term 1 2025 NZ Uniform will have a pop up shop at our school for purchases, with a date to be advised.

Karen Rennie  
Uniform Committee.  
027 613 6249



### **THE PARENT SQUAD**

Each Saturday, from 5-6pm, on NewsTalk ZB, there's an enjoyable programme for Families, especially for parents and caregivers. Why not check it out?

'If it takes a village to raise a child, it must take a whole country to raise a family! Newstalk ZB's Parent Squad helps to do just that. Joined by expert guests The Weekend Collective team delves into the complexities of Kiwi family life.'

[The Parent Squad](#)

[iHeart](#)

Newstalk ZB's Parent Squad helps to do just that. Joined by expert guests The Weekend Collective team delves into the complexities of Kiwi family life. Episodes..

<https://www.iheart.com/podcast/1049-the-parent-squad-29915819/>



# SkoolLoop


Chim Chim  
Safety Keepers & Chimney Sweepers

Tap Here


PAWS
Pegasus and Woodend  
**VETERINARY**  
Services

➔


STRAIGHT-N-PAINT  
COLLISION REPAIR SPECIALISTS


Affordable Concrete & Paving  

Tap here for more info



Before School ➔

After School ➔

Holidays ➔

Enrol ➔







TAP HERE

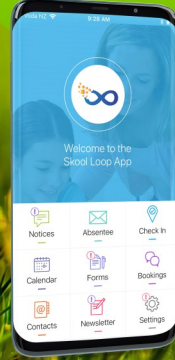
McCormicks Auto Glass Limited
Mobile Service – I will come to you  
Call Jai: 027 270 5508

## Ready Set Spring

Stay in the Loop with the Skool Loop App

Download today to keep up to date with school information. Notices, Newsletters, Absentee Notification and much more



Simple Free Download:

In Google play & App Store search 'Skool Loop' & choose our school once installed.

GET IT ON  
Google Play

Download on the  
App Store


Repair & Replacement

TAP HERE

morechoice.
mikegreerhomes



SPECIAL OFFER  
TAP HERE

Phone 03 313 1430
lambandhayward.co.nz
Lamb & Hayward


➔


➔


North Canterbury Lawyers

## RNLS App Sponsors!

If you would like to advertise on the School Skool Loop App please email

[Content@skoolloop.com](mailto:Content@skoolloop.com)

To download our app: In Google Play & App Store search 'Skool Loop' and choose School once installed.



All our school news in one place

## Download The Skool Loop App Today




Simple free download: In Google Play & App Store search 'Skool Loop' and choose our school once installed.

### Downloading the Skool Loop app - a step by step guide

Once you have downloaded the Skool Loop App, via either your Google Play or App store, please follow the below instructions to select your school -

- Open the Skool Loop App - you will land on a welcome page.
- Click the 'Select your schools' this will bring you to a menu you can either search your school or follow the country/region prompts.
- Once you reach your school, select it with the tick on the righthand side.
- Tap the 'select schools' button in the top right corner.
- Tap the big orange choose button. This will load your school and bring you to the settings page.
- Subscribe to the groups that are relevant to you, then click the 'go back' button on your phone, which will bring you to the main screen of your schools app.




THE SKOOL LOOP APP





# Notices

## Gateway Stadium / Events Centre Bookings

Please contact [bookings@rnls.school.nz](mailto:bookings@rnls.school.nz) for information on availability for **public bookings outside school hours.**

**Hardship Fund:** Any donation received for the benefit of families who may be struggling financially, is very much appreciated. Please make your payment to the regular school account tagging the payment as **Hardship Fund.**

Rangiora New Life School 01 0877 0072756 02

## Athlete's Foot - School Rewards

Just nominate our school at the time of purchase, i.e. Rangiora New Life School!  
Eligible: RNLS staff, students or members of their families. \$15 worth of sports equipment or \$10 cash from every pair of shoes purchased from our Northlands Athlete's Foot store, will be donated to RNLS.

<https://mentalhealth.org.nz/five-ways-to-wellbeing>

## FIVE WAYS TO WELLBEING



INTRODUCE THESE FIVE SIMPLE STRATEGIES INTO YOUR LIFE AND YOU WILL FEEL THE BENEFITS.

Mental Health Foundation  
mauri iā, mauri ora  
[www.mentalhealth.org.nz](http://www.mentalhealth.org.nz)



# The Hope Op Shop

Rangiora New Life School  
Second Hand Uniform  
Shop in conjunction with  
the Hope Op Shop.

113 East Belt  
Open Monday - Friday 9am - 3.30pm  
Saturday 9.30am - 12.30pm  
[www.thehopecommunitytrust.org](http://www.thehopecommunitytrust.org)