



Rangiora New Life School

A Ministry of Gateway Life Church

Te kura Ora Hou o Rangiora

13 November 2024

Term 4 Week 5 2024

What's On?

Term 4

Wed 13 Nov	Yr 10 Drama Performance evening
Thur 14 Nov	Teacher Only Day—school closed
Fri 15 Nov	Canterbury Anniversary—school closed
Wed 27 Nov	Proprietors Special Character Consultation Church 6.00 to 8.30pm
Thu 28 Nov	Yrs 11—13 Prizegiving at 12.30pm
Fri 6 Dec	Founder's Day Assembly at 2.30pm
Mon 9 Dec to Wed 11 Dec	Yr 10 Camp
Sat 7 Dec	Yr 8 Formal
Thurs 12 Dec	Yrs 0-8 Prizegiving at 1.00pm Last day for Primary
Fri 13 Dec	Yrs 9-10 Prizegiving at 10.00am Term 4 ends at 1.00pm

2025 Term 1

Mon 27 Jan	Teacher Only Day
Tues 28 Jan	Yr11-13 Course Confirmation changes only
Wed 29 Jan	Teacher Only Day
Thurs 30 Jan	8.50am—3.10pm Whole school in uniform
Fri 31 Jan	Regular School Day
Thurs Feb 6	Waitangi Day—school closed
Fri Feb 7	Teacher Only Day—school closed
Mon 17—Wed 19 Feb	Yr 9 Camp
Tues 4—Wed 5 Mar	Photolife—school photos
Mon 17 Mar	Teacher Only Day—school closed
Fri 11 Apr	Term 1 ends at 3.10pm

2024 Board of Trustee Meeting Dates

04 December

(7 pm—RNLS Library)

To access the Agenda and Minutes, please go to:
<https://rnls.school.nz/board-of-trustees>

School Docs: RNLS Policies & Procedures including links to our Complaints Process.

For any information regarding our Policies & Procedures please check out rnls.school.nz

User name: RNLS Password: seek

Term Dates for 2024

Term 4 2024

Monday 14 October—Friday 13 December

Mon 14 Oct	School opens for all students at 8.50
Mon 28 Oct	Labour Day—School Closed
Thu 14 Nov	Teacher Only Day—School Closed
Fri 15 Nov	Canterbury Anniversary—School Closed
Thu 28 Nov	Yrs 11—13 Prizegiving at 12.30pm
Fri 6 Dec	Founder's Day Assembly at 2.30pm
Thurs 12 Dec	Yrs 0-8 Prizegiving at 1.00pm Last day for Primary
Fri 13 Dec	Yrs 9-10 Prizegiving at 10.00am Term 4 ends at 1.00pm

Term 1 2025

Thursday 30 January to Friday 11 April

Thurs 30 Jan	School opens for all students at 8.50
Thurs 6 Feb	Waitangi Day—school closed
Fri 7 Feb	Teacher Only Day—school closed
Mon 17 Mar	Teacher Only Day—school closed
Fri 11 April	Term 1 ends at 3.10pm

Dear Parents / Caregivers - Kia ora koutou

As we move to the end of the school year, I want to reiterate what I have said before about the service our parents give to our school community, whether it be the PTA, the Coffee Team, supporting sports events and athletics, our community is enriched by this support. I thank you.

You will see on the left, of this page, dates for the rest of this year, and for next year.

All our prizegivings can be attended in person, or viewed live via stream, or watched after the fact. Do encourage families from further afield to be part of our celebrations as we complete the year.

Please note the dates below:

Thur 14 Nov **Teacher Only Day—school closed**

Fri 15 Nov **Canterbury Anniversary—school closed**

Ngā manaakitanga

Stephen Walters



RNLS Uniform

As many of you are aware, the pinafore and kilts have been difficult to come by, we now have new stock. These are stocked by NZ Uniforms and can be bought online or from their shop in Blenheim Rd. They are still the Royal Stewart Tartan but in BLUE and not red as we have at the moment. They are well made and the fabric is a wool and polyester blend. In Term 1 2025 NZ Uniform will have a pop up shop at our school for purchases, with a date to be advised. Karen Rennie—Uniform Committee



A Community That Cares

Students Who Achieve

Denchs Rd, Rangiora 7400 t: (03) 313 6332

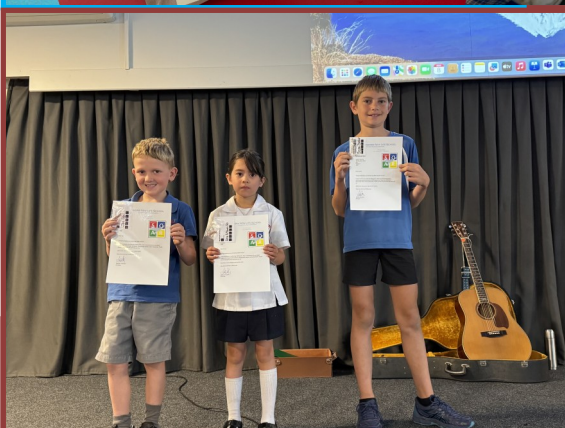
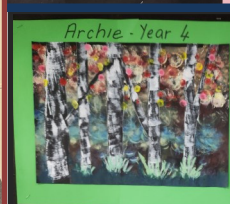
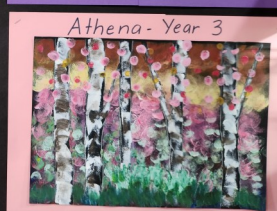
e: admin@rnls.school.nz www.rnls.school.nz

Te kura ora hou o Rangiora

Gloop is GREAT!



SILVER BIRCH ART YEAR 3/4



NB from the RNLS Proprietors: The only dogs permitted on school premises are those officially trained for sight impaired and sensory issue work. This applies to both within and outside school instructional times— i.e. not at any time!

God is one God

“Hear O Israel! The LORD our God, the Lord is one.” Deuteronomy 6:4

“I am God, and there is no other; I am God, and there is none like me.” Isaiah 46:9

Reminder: Parents please note that school opens for **student access from 8.30 am**—ie not beforehand please.
We have a duty teacher supervising the Denchs Rd netball court area from 8:30 am to 8:50 am (prior to class entry).
RNLS staff cannot supervise children prior to 8:30 am.

NB: If your emails, caregiver details, address, phone numbers, circumstances, etc have changed over the last few months please let the school office staff know asap. reception@rnls.school.nz or 03 313 6332.

Any attendance related queries should be sent to reception@rnls.school.nz

Thank you to our parents who respond to our absence texts every morning. If we don't hear from you by text we will follow up with a phone call approx. 30 minutes later.



Christchurch Schools Music Festival

On Friday 25th October I went to the Christchurch town hall to enjoy the Christchurch Schools Music Festival. The festival consists of a different twenty plus schools performing on each of the four nights to make up a 'massed choir', plus an orchestra (87 members), a band (53 different members), a specialist junior choir (87 members) and a specialist senior choir (89 members).

Seventeen of our year 5,6 and 7 students joined over 1000 other young people under the age of 12 on stage to give a fantastic evening's entertainment.

What a night – from the very first note (the warm up!) my spine was tingling. Our students were seated in the front row so I had a perfect view of all of them singing their hearts out - I have heard professional musicians and singers who didn't match the standard of those young people on Friday.

Huge thanks and congratulations are due to Graham Single for the work he put in to rehearsing and preparing our students for their performance. For them to have the opportunity to experience a truly incredible evening is something I hope they all appreciate.

Special mention and congratulations to Evelyn Routledge for her successful audition and subsequent inclusion in the senior specialist choir.

Well done to you all, you represented our school well.—Judy Evans—Teacher Aide



News

A huge thank-you to the Year 11 Food class! They made over 200 meat patties for St Vincent de Paul. These meat patties will be used to supply families in need in our community. It was wonderful to see these students willing to put in the mahi to get this project completed in their last days before study leave. Katrina de Roo



RNLS Winter Kilts

RNLS kilts are directly available from the school only. The kilts are polyester/viscose. New \$50.00 or second hand \$20.00.

For enquiries and purchases, please contact :

reception@rnls.school.nz

Or karenrennie@rnls.school.nz

Or 03 313 6332

Access to free period products

Thanks to the Ministry of Education's *access to period products initiative*, RNLS has a supply of free period products for children and young people at the school to conveniently access from the school office.. To request, please email : nancywu@rnls.school or contact the School Office..

News

Soft Rescue Toy Request

One of the rewards we have at school are soft rescue toys. These are pre-used soft toys that have been washed and given to the school. They are a very popular reward option amongst children of all ages in primary (see picture below). If you have any such toys that are surplus, it would be great if they can come along to school to have 'another life of love.' They can be given to form teachers or Mr Duncan Webb.



We are down to our last selection of soft rescue toys at RNLS.



Olivia Glover—3rd

Zylie Mac Donald—3rd

Amelia Dean—2nd

won medals at the Cheerleading
Super National Championships.

RNLS Barista Coffee & Hot Drinks

		Students/Teachers	Parents
Long Black / Americano		\$3	\$4
Flat White		\$3	\$4
Latte		\$3	\$4
Mocha		\$3	\$4
Chai Latte		\$3	\$4
Hot Chocolate (GF)	\$2sm	\$3	\$4
Fluffy	\$2sm	\$3	

Decaf coffee available



Dairy Free Milk: 50c Soy, Almond, Oat

Shots: 50c Hazelnut, Caramel, Vanilla

Discount Cards: \$15 Staff & Students

\$20 Parents/Whānau

Loyalty Cards: Buy 5 drinks get 6th one **FREE**



Extra News



Gateway Life Church has recommenced **Youth Group**—every second Friday nights 7-9 pm for ages 12-18.
All young people are welcome!

Further additional information (if required): Sharon Eloff 021 030 4781.



NZ OWNED AND OPERATED



LISTENING TO FAMILIES

*Designed for families, and for educators and health professionals working with young people, Listening to Families connects you with **trusted specialists**, empowering individuals, whānau and communities with **advice and support**.*

<https://www.listeningtofamilies.co.nz> **Listening to Families** is a grassroots solution, providing families access to the answers to commonly asked questions in an easy-to-use, conversational video

Support Services

All right parenting www.allright.org.nz/parents

Altogether Autism is a service which offers specialised information and support around ASD. gtrcanterbury@parent2parent.org.nz

Aviva

Aviva is a Canterbury-wide, specialist family violence and sexual violence agency. We offer an extensive range of support services and programmes for people of any age (children, youth, and adults), any gender, sexuality, or experience of violence; to become safe and begin a journey toward a fulfilling, violence-free life.

Freephone: 0800 28 48 26

Email: enquiries@aviva.org.nz

Barnardos

LEAP - work with families whose vulnerability arises from their challenges with one or more of the following: family violence, alcohol and drug use, child health or disability, emotional abuse or neglect, risk or actual statutory involvement, parental mental health issues- for more information

Ph: 0800 Barnardos (0800227627)

Battered Women's Trust – North Canterbury

Battered Women's Trust (includes Rural Services)

For women, children & young people, individual & group domestic violence education

Office: 033324122 | Crisis & support line - 0800 REFUGE

Budgeting Services North Canterbury

A free and confidential financial mentoring and budgeting advice service to individuals and families in the Waimakariri and Hurunui

Ph: 03 313 3505

Email: servicesmanager@bsnc.org.nz

CCS Disability Action, North Canterbury

Support & Advocacy for people & their families

Ph: Sandra Black 0273687525 and Jes Kircher 0272779857

Comcare Trust North Canterbury

Offer strengths-based recovery focused supports for people with mental illness and/or addictions. Community Support Services, Peer Support Services, and Activelinks Health & Fitness Services.

Ph: 0800 537 3464 <https://www.comcare.org.nz>

Community Energy Action Charitable Trust

Services include insulation, heating, energy advice, and good quality recycled curtains. Services are available to all households with subsidies up to 100% available to eligible households. Ph. 0800 GETWARM or visit www cea.co.nz

Oranga Tamariki – Oranga Tamariki Ministry for Children (Regional)

High Street, Rangiora Ph: 0508 326 459

Community Wellbeing North Canterbury Trust

Provides free community and social services that strengthen the wellbeing of families, children and young people in Waimakariri and the Hurunui.

Services include:

- Wellbeing support for whānau/families and tamariki/children
- Community parenting programmes
- Early childhood education
- Wellbeing support for rangatahi/young people including specialist alcohol and drug support
- Kaiapoi food bank
- Restorative justice

T: 03 310 6375 E: info@wellbeingnc.org.nz or www.wellbeingnc.org.nz

Early Start

A home visiting service that provides support and parenting programmes in the Waimakariri and Hurunui areas to whānau/families who are expecting a new-born or caring for a new baby. Phone 0800378278. Email: reception@earlystart.co.nz

Hope Community Trust

Community Support, wrap around Care for families and individuals, Counselling, Community Garden drop in area, Men's and Women's connect groups. 115 East Belt, Rangiora.

Ph: 03 928 3066 support@hopecommunitytrust.co.nz

Oxford Community Trust

For community information, budget advice, family support, counselling, holiday & youth programmes. Main St, Oxford.

Ph: Jo Ealam 03 312 3006

Parenting Through Separation

To register please visit www.familyworksupportsouth.org.nz. Click News and Events (top right of page), then click events. Alternatively, you can contact Karen on 0800477874

Plunket

Plunket Well Child Service

Well Child services, home visits & appointments.

Plunket Adminline 0800 184 03

24/7 Phone support & data free website www.plunket.org.nz

Plunket Post Natal Adjustment Programme

Supports families experiencing difficulties adjusting to parenting, individual & group Ph: 03 365 1646

Plunket Pregnancy and Parenting Education Course

Antenatal classes for parents-to-be and their support person.

Info and options for: pregnancy, labour, birth and the postnatal period. www.plunketppe.org.nz Ph: 027 275 8477

<https://www.facebook.com/canterburyplunket/>

Clothing Exchange – please refer to the Canterbury Plunket Facebook page for details.

Presbyterian Support USI Family Works

We work with parents/caregivers and their children to the age of 18. The work is based around parenting and relationships within the family unit. Ph: Michelle Ramsay 03 2612887 micheller@psusi.org.nz

Public Health Nurses

Visit schools to advise on children's health, and work with families on health related concerns. Ph: Catherine Dowle 03 311 8665 or Anne Braid 03 311 8664 catherine.dowle@cchb.health.nz

Rachel's House Trust - Young Parent Support

Rachel's House Trust- Supporting Mothers and Whānau

"Supporting mothers and whānau on their journey from pregnancy to parenting. We provide a safe space for families to navigate the

changing world around them. Playgroup every Thursday at 10am in the Loft, 1-1 social work support, advocacy and pre loved clothing aged 0 to 5yrs all free. 021 090 11602 for enquiries

socialworker@racheshouse.org.nz

Rangiora Salvation Army Family Store Budgeting advice & Food Bank, 15 Albert St, Rangiora 03 313 6947

St John Health Shuttle, North Canterbury

Transport to Chch for medical related appointments, bookings through: St John Ph: 0800 383 373

Yellow Brick Road Te Wāpūāhoaho: Supporting families towards mental wellbeing

Yellow Brick Road is an organisation supporting families who care for a loved one with mental health challenges. We offer confidential guidance and navigation through mental health services, advocacy, and education. Individual/family meetings and/or a number of different programmes for both children, adolescents, adults and groups, plus a variety of support groups including those bereaved by suicide. Service is free and available via self-referral or a health professional. support.canterbury@yellowbrickroad.org.nz / 0800 87 66 82

Te Puawaitanga ki Ōtautahi Trust

The Trust supports whānau throughout the different stages in life. Our services are delivered in the home and community.

- *Whānau Ora Navigators* can help you plan for now and the future to reach your goals.
- *Rapuaora Community Nursing Team* can help you understand and manage life with chronic conditions (such as diabetes, heart and respiratory disease).
- *Vaccination mahi* including COVID-19, seasonal flu and measles, mumps and rubella (MMR) for eligible whānau.
- *Rongoā* including with taonga pūrora.
- *Family Start* an intensive home visiting programme to improve tamariki health, growth and whānau circumstances
- *Tamaiti Healthy Homes* aims to increase the number of tamariki living in warm, dry and healthy homes to reduce avoidable hospitalisations and ill health due to housing-related conditions.

Extra News



PASSING EXAMS ON-LINE LEARNING PROGRAMME Helping Senior Students Improve Their Exam Results

Dear Parents,

Final exams are approaching fast!

To support our seniors with their exam preparation, we wanted you to know about Innervate Education's on-line learning programme, *Passing Exams*.

<http://howtopassexams.com/>

Patrick Sherratt, from Innervate, presents ten video units as a 5-step "how to study" approach – everything your teen needs to know to help optimise their exam preparation and ultimately results.

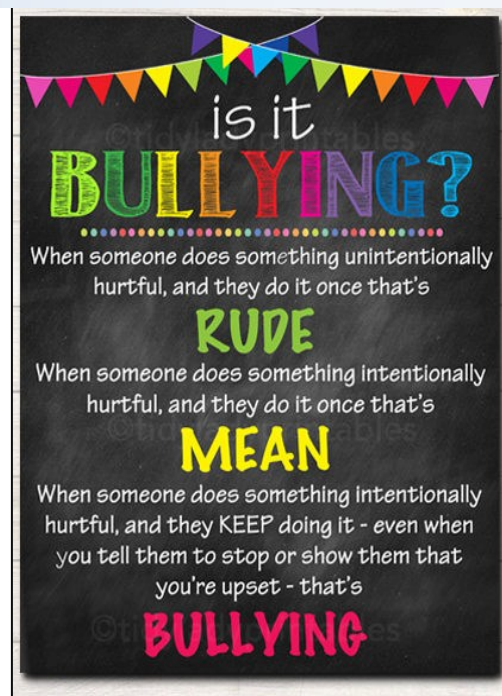
Within these steps, Patrick also presents solutions to common challenges in the lead-up to their exams. The programme includes solutions for how to:

- improve motivation,
- reduce distractions,
- optimise memory retention, and
- reduce exam nerves.

To get an overview of the programme, simply visit: <http://howtopassexams.com/>

We hope this programme will give you an opportunity to support your teen from home as they move towards their end-of-year exams.

Thank you.



"For God gave us a spirit not of fear but of power and love and self-control."

— 2 TIMOTHY 1:7



Southbrook School
December 2024
26 Marshall Road, Rangiora

Dec Holiday Programme

Full Day 7:30-6:00	07:30 a.m.-06:00 p.m.	\$69.00 (All Inclusive - No Extra Fees)
Full Day 8:30-6:00	08:30 a.m.-06:00 p.m.	\$59.00 (All Inclusive - No Extra Fees)
Half Day 7:30-3:00	07:30 a.m.-03:00 p.m.	\$59.00 (All Inclusive - No Extra Fees)
Half Day 8:30-3:00	08:30 a.m.-03:00 p.m.	\$49.00 (All Inclusive - No Extra Fees)



** WINZ SUBSIDIES AVAILABLE ** All Programmes are MSD approved. Children from ALL schools welcome.

For more information, call 027 687 0001 Or 027 239 7690
or email info@kidsbase.co.nz

Book now at Kidsbase.aimyplus.com

Powered By **aimy**

CLARKVILLE SCHOOL
PTA PRESENTS...

NERF PARTY

Saturday 23rd November
6pm to 8pm

MOVE X

230 Maces Road, Bromley

<https://events.humanitix.com/movex-nerf-party>

ADMISSION FEE \$20 per person

THE PARENT SQUAD

Each Saturday, from 5-6pm, on NewsTalk ZB, there's an enjoyable programme for Families, especially for parents and caregivers. Why not check it out?

'If it takes a village to raise a child, it must take a whole country to raise a family! Newstalk ZB's Parent Squad helps to do just that. Joined by expert guests The Weekend Collective team delves into the complexities of Kiwi family life.'

[The Parent Squad](#)

[iHeart](#)

Newstalk ZB's **Parent Squad** helps to do just that. Joined by expert guests The Weekend Collective team delves into the complexities of Kiwi family life. **Episodes..**

<https://www.iheart.com/podcast/1049-the-parent-squad-29915819/>

SkoolLoop


Chim Chim
 Safety Keepers & Chimney Sweepers
 [Tap Here](#)


PAWS Pegasus and Woodend
VETERINARY
 Services
 


STRAIGHT-N-PAINT
 COLLISION REPAIR SPECIALISTS


Affordable Concrete & Paving
[Tap here for more info](#)


Kids Base
 kidsbase.co.nz
 [Before School](#)
[After School](#)
[Holidays](#)
[Enrol](#)


TAW BUILDERS LTD
 Honesty - Reliability - Quality
 

McCormicks Auto Glass Limited

Mobile Service – I will come to you
 Call Jai: 027 270 5508


NOVUS glass
 Repair & Replacement
 [TAP HERE](#)

morechoice.

mikegreerhomes


ANYTIME FITNESS
 RANGIORA
 [SPECIAL OFFER](#)
[TAP HERE](#)

Phone 03 313 1430
 lambandhayward.co.nz

Lamb & Hayward


WARWICK KIRWAN PLUMBING



Electrical Laser Rangiora



KATHERINE WILMOTT LEGAL LTD

North Canterbury Lawyers

Ready Set Spring

Stay in the Loop with the Skool Loop App

Download today to keep up to date with school information. Notices, Newsletters, Absentee Notification and much more




Simple Free Download: In Google play & App Store search 'Skool Loop' & choose our school once installed.

GET IT ON Google Play

Download on the App Store

RNLS App Sponsors!

If you would like to advertise on the School Skool Loop App please email

Content@skoolloop.com

To download our app: In Google Play & App Store search 'Skool Loop' and choose School once installed.



All our school news in one place

Download The Skool Loop App Today

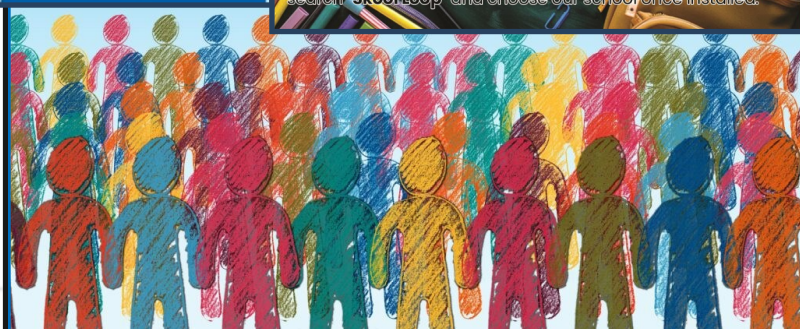


Simple free download: In Google Play & App Store search 'Skool Loop' and choose our school once installed.

Downloading the Skool Loop app - a step by step guide

Once you have downloaded the Skool Loop App, via either your Google Play or App store, please follow the below instructions to select your school -

- Open the Skool Loop App - you will land on a welcome page.
- Click the 'Select your schools' this will bring you to a menu you can either search your school or follow the country/region prompts.
- Once you reach your school, select it with the tick on the righthand side.
- Tap the 'select schools' button in the top right corner.
- Tap the big orange choose button. This will load your school and bring you to the settings page.
- Subscribe to the groups that are relevant to you, then click the 'go back' button on your phone, which will bring you to the main screen of your schools app.



Notices

Gateway Stadium / Events Centre Bookings

Please contact bookings@rnls.school.nz for information on availability for public bookings outside school hours.

Hardship Fund: Any donation received for the benefit of families who may be struggling financially, is very much appreciated. Please make your payment to the regular school account tagging the payment as **Hardship Fund**.

Rangiora New Life School 01 0877 0072756 02

<https://mentalhealth.org.nz/five-ways-to-wellbeing>

Athlete's Foot - School Rewards

Just nominate our school at the time of purchase, i.e. Rangiora New Life School!

Eligible: RNLS staff, students or members of their families. \$15 worth of sports equipment or \$10 cash from every pair of shoes purchased from our Northlands Athlete's Foot store, will be donated to RNLS.

FIVE WAYS TO WELLBEING



INTRODUCE THESE FIVE SIMPLE STRATEGIES INTO YOUR LIFE AND YOU WILL FEEL THE BENEFITS.

Mental Health Foundation
mauri iā, mauri ora
www.mentalhealth.org.nz



The Hope Op Shop

Rangiora New Life School
Second Hand Uniform
Shop in conjunction with
the Hope Op Shop.

113 East Belt
Open Monday - Friday 9am - 3.30pm
Saturday 9.30am - 12.30pm
www.thehopecommunitytrust.org